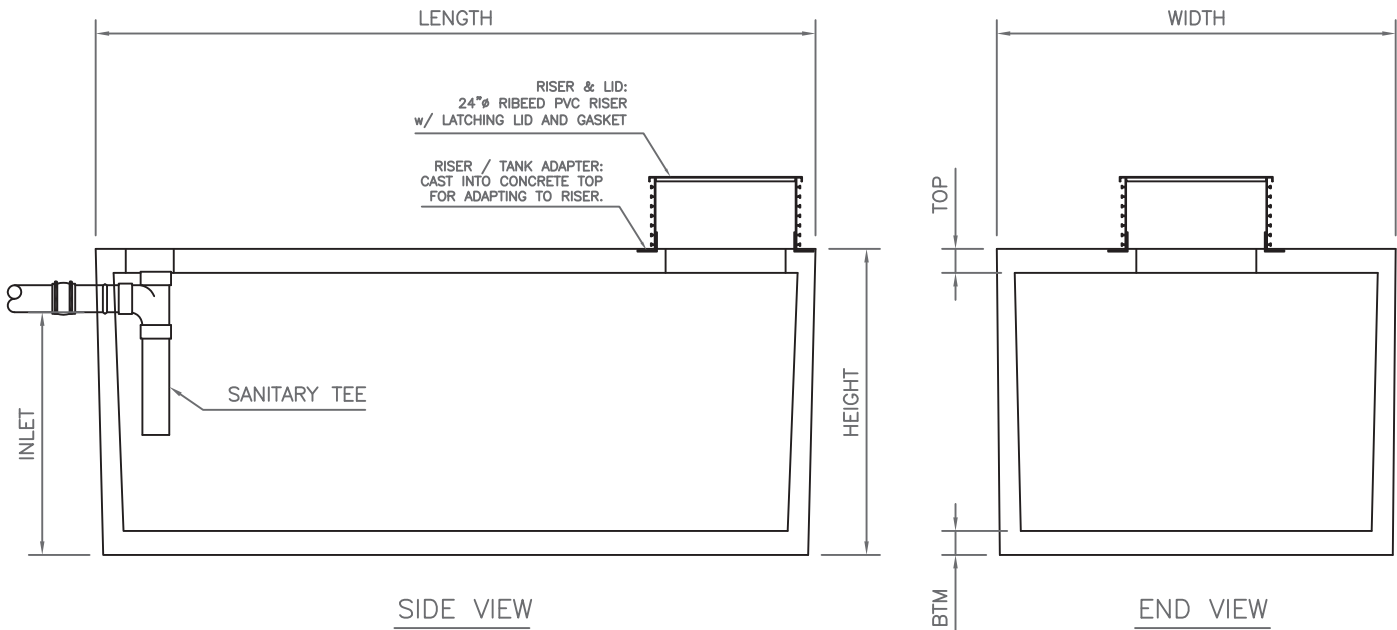


TOP VIEW



SIDE VIEW

END VIEW

SIZE	INLET	HEIGHT	LENGTH	WIDTH	WEIGHT
500 GAL.	48.5"	58"	54"	66"	6,000
1000 GAL.	41"	51"	120"	66"	
1150 GAL. *		51"	120"	66"	
1250 GAL.	48"	58"	120"	66"	
1500 GAL.	48"	58"	144"	66"	
1500 GAL. PD	48"	58"	144"	66"	
1500 GAL. COMBO	45"	54"	129"	86"	
1750 GAL. *		54"	129"	86"	
2000 GAL.	54"	64"	129"	86"	
2250 GAL. *		64"	129"	86"	
3000 GAL.	78"	92"	172"	83"	
4000 GAL. *		92"	172"	83"	

NOTES:

1. SEE STANDARD TANK NOTES PAGE AND THE APPROVED STAMPED DEQ APPROVED DRAWINGS FOR ADDITIONAL INFORMATION.
2. * DENOTES WATER TANK.
3. ALL WEIGHTS ARE APPROXIMATE.
4. SOME TANKS HAVE CONCRETE BAFFLE WALLS, OUTLETS, AND / OR MULTIPLE ACCESS RISERS. SEE APPROVED DEQ DRAWINGS FOR SPECIFICS.
5. THE 1,000 AND 1,500 GALLON TANKS ARE AVAILABLE AS ROUND TANKS.

ADVANTAGE PRECAST I N C.

1302 Candlewood Dr N Voice: (503) 390-2048
 Keizer, Oregon 97303 Fax: (503) 390-1645
www.advantageprecast.com

"A Locally Owned Small Business, Where Service Comes First."



STANDARD SEPTIC TANK

Concrete: 4000psi +

Weight: See table

DATE:

Jun. 2009