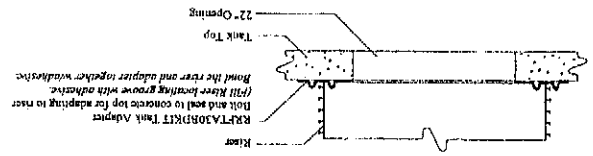
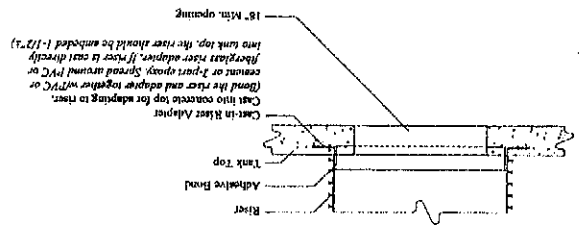


**30" Riser Attachment Detail**



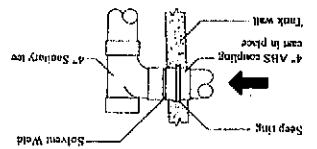
Note:  
See Access Riser Instructions (document # NIN-RLA-RR-1)  
for further detail.

**Riser Attachment Detail**

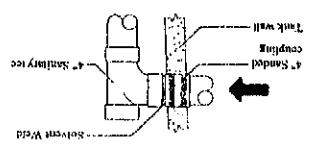


Note:  
See Access Riser Instructions (document # NIN-RLA-RR-1)  
for further detail.

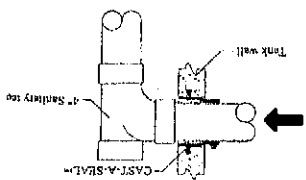
**Coupling with Seep Ring Inlet/Outlet Detail**



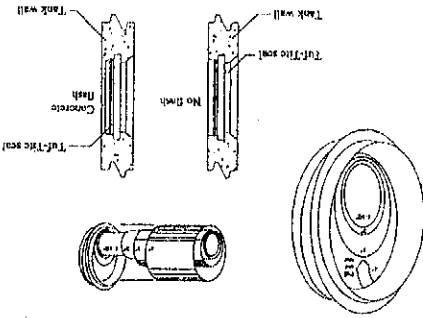
**Sanded Coupling Inlet/Outlet Detail**



**Cast-A-Seal™ Inlet/Outlet Detail**



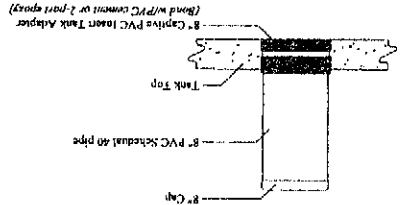
**Splice Box Detail**



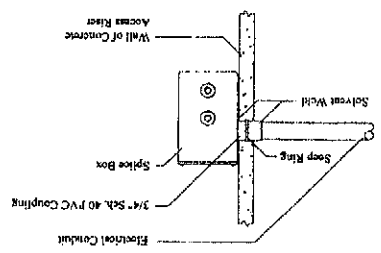
**Tuf-Tite Inlet/Outlet Detail**

**RECEIVED**  
MAY 2002  
Water Control Division  
Light of Environment Quality

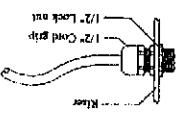
**8" PVC Inspection Port Detail**



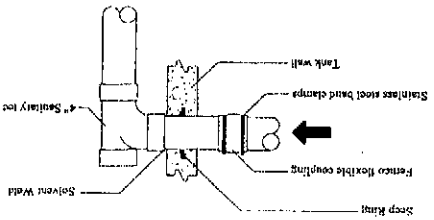
**Splice Box with Concrete Riser**



**Strain Relief Detail**



**Ferroc Inlet/Outlet Detail**



**General Detail Sheet**

Approved By: TRB P.E.	Designed By: TRB P.E.
Drawing By: CSI	Drawing #: 6 of 6
Date:	Project #:
Scale: none	Revision #:

ORANCO SYSTEMS, INC.  
816 AIRWAY AVENUE  
SUTHERLIN, OR 97279  
PHONE: 501-459-4449